



MONTHLY MEMBERSHIP PROGRESS REPORT

District 325B1

Results as of: 12/31/2017

GMT: KHAGENDRA SITAULA

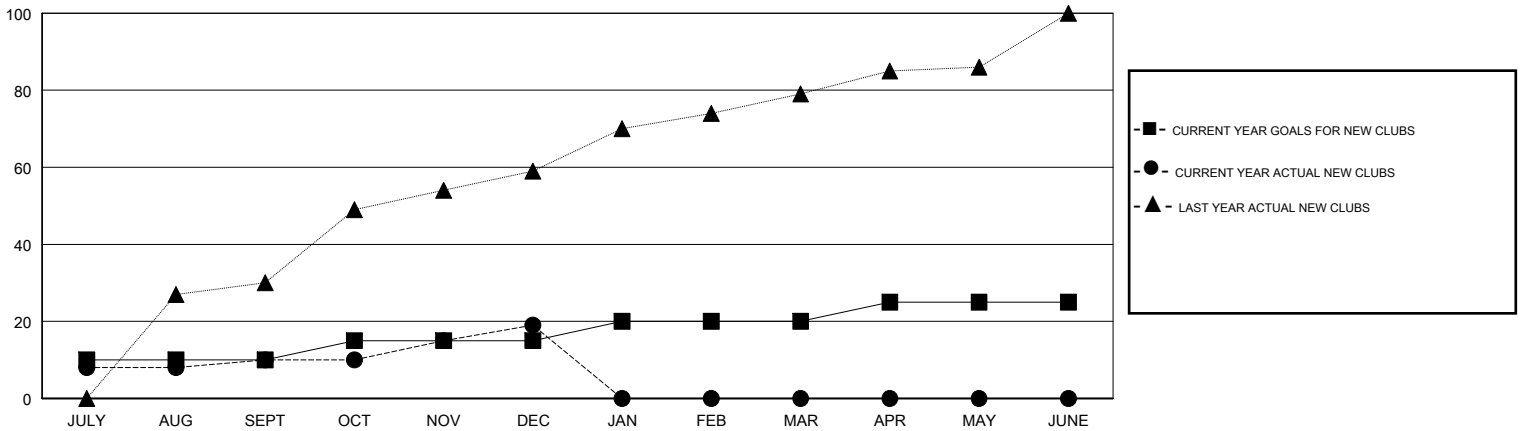
LOCATION NEPAL

GMT CA

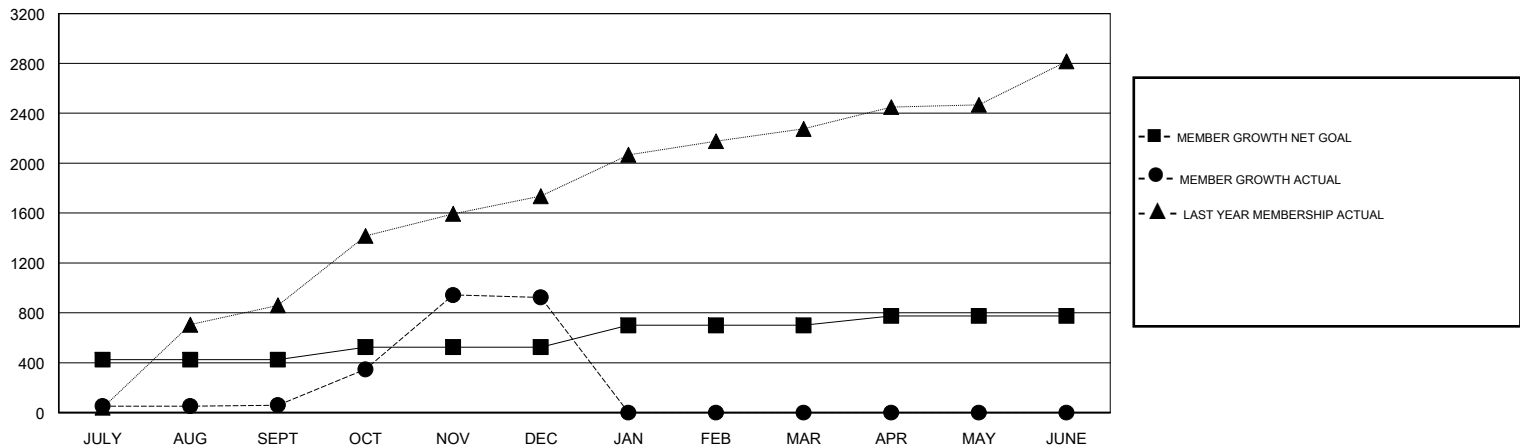
Clubs			
RESULTS FOR 2017-2018			
QUARTER	NEW CLUB GOAL	NEW CLUBS	DROPPED CLUBS
JULY/AUG/SEPT	10	10	0
OCT/NOV/DEC	5	9	0
JAN/FEB/MAR	5	0	0
APR/MAY/JUNE	5	0	0

Members			
RESULTS FOR 2017-2018			
QUARTER	MEMBER GROWTH NET GOAL	MEMBER GROWTH ACTUAL	DROPPED MEMBERS ACTUAL (including transfers)
JULY/AUG/SEPT	425	492	413
OCT/NOV/DEC	100	1,293	348
JAN/FEB/MAR	175	0	0
APR/MAY/JUNE	75	0	0

GOALS AND ACTUAL NEW CLUBS CUMULATIVE



GOALS AND ACTUAL MEMBERS CUMULATIVE



DROPPED CLUBS: 0	202 CLUBS OF 329 ADDED 1 OR MORE NEW MEMBERS	<u>GENDER DISTRIBUTION</u>	
DROPPED MEMBERS		MALE	7,872 (75.77%)
DECEASED	3	FEMALE	2,518 (24.23%)
CLUB CANCELLED	0	Women Percentage Fiscal Year Goal: 22%	
OTHER	758	TOTAL FAMILY UNIT MEMBERS	5,309
TOTAL	761	FAMILY MEMBERS PAYING HALF DUES	3,257

[CLICK HERE FOR CUMULATIVE MEMBERSHIP DATA](#)